

◀ ◀ ◀ ◀ Katrin - FELIZ Hamburg



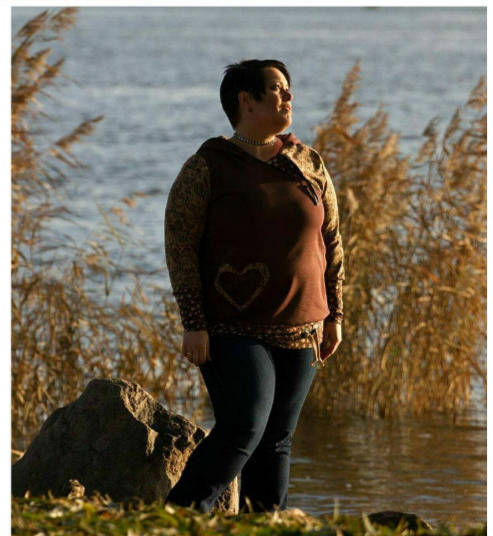
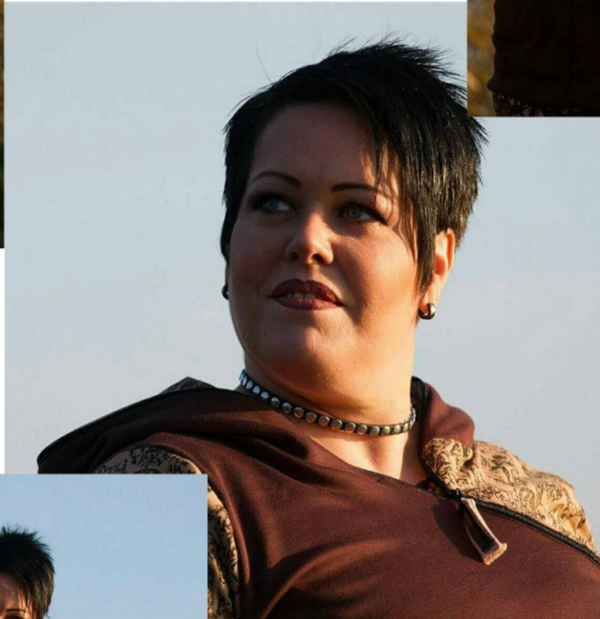
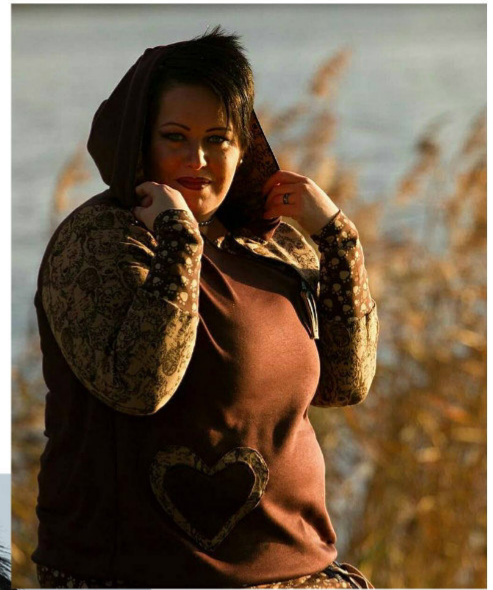
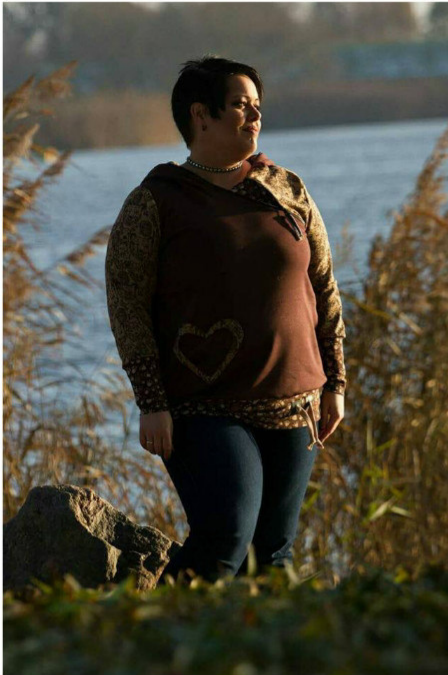
◀ ◀ ◀ ◀ Svenja - Waldesfrieden



◀ ◀ ◀ ◀ Stefanie - Malu



◀ ◀ ◀ ◀ Sandra - Gorgeous 8



◀ ◀ ◀ ◀ Katja -
Räubermama



Stephanie-MAD Hüther



Bianca - Bingys Nadelwerke

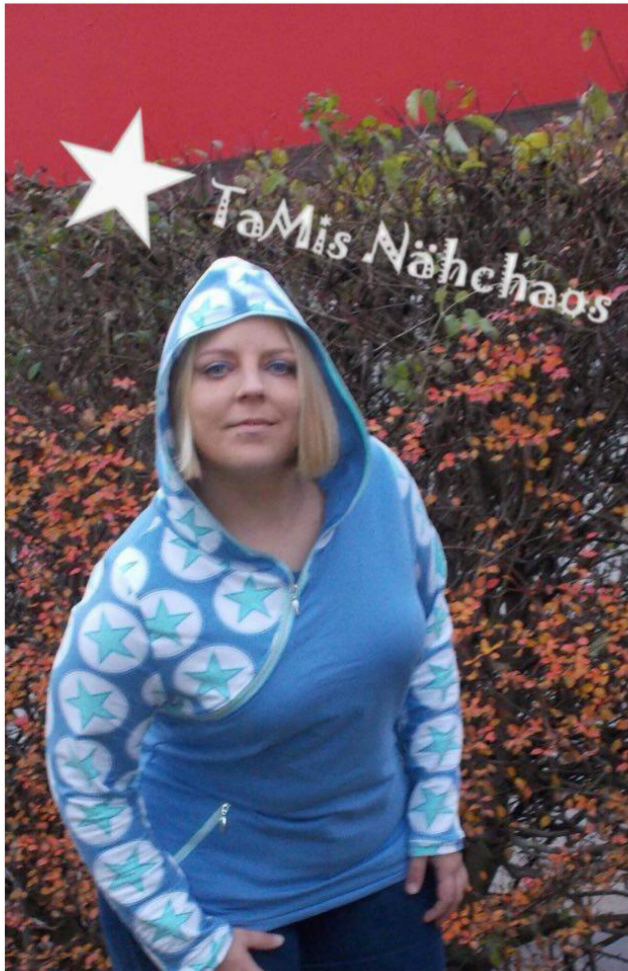
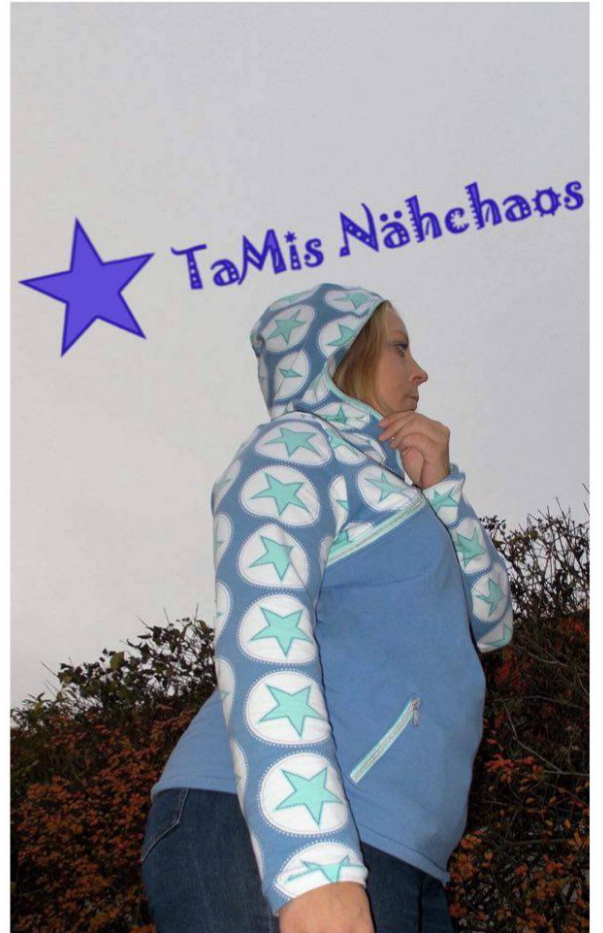


Steffi - Ninnie





Tanja - TaMis Nähchaos



Tanja - Schoko.Keks.Maus näht





Dana - Hupilini

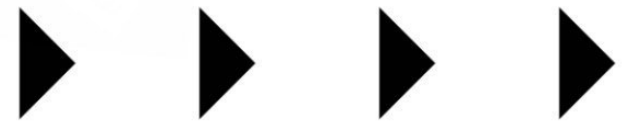




Marina - mandarinchen



◀ ◀ ◀ ◀ Katja -
naehstube fuer familie und freunde



Nadine -Pinky's Nähecke



◀ ◀ ◀ ◀ Claudia



Susan -
Pferdemädchen
näht



Jeannette - Twinnis Nähstübchen





Nadine - Namaleen



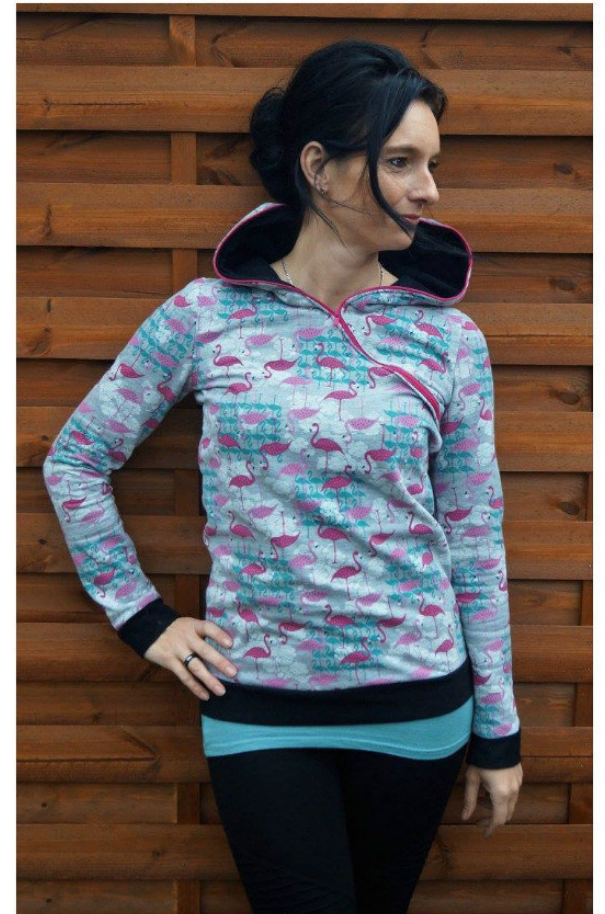
◀ ◀ ◀ ◀ Nadine - LaJopa



◀ ◀ ◀ ◀ Svenja - Waldesfrieden



Käthi - Schneckendesign



Andrea - Fräulein Einzigartig



Anna - Elpha Style



◀ ◀ ◀ ◀ Mandy - Mamilu Design



◀ ◀ ◀ ◀ Karina - FaSiKaMi

